

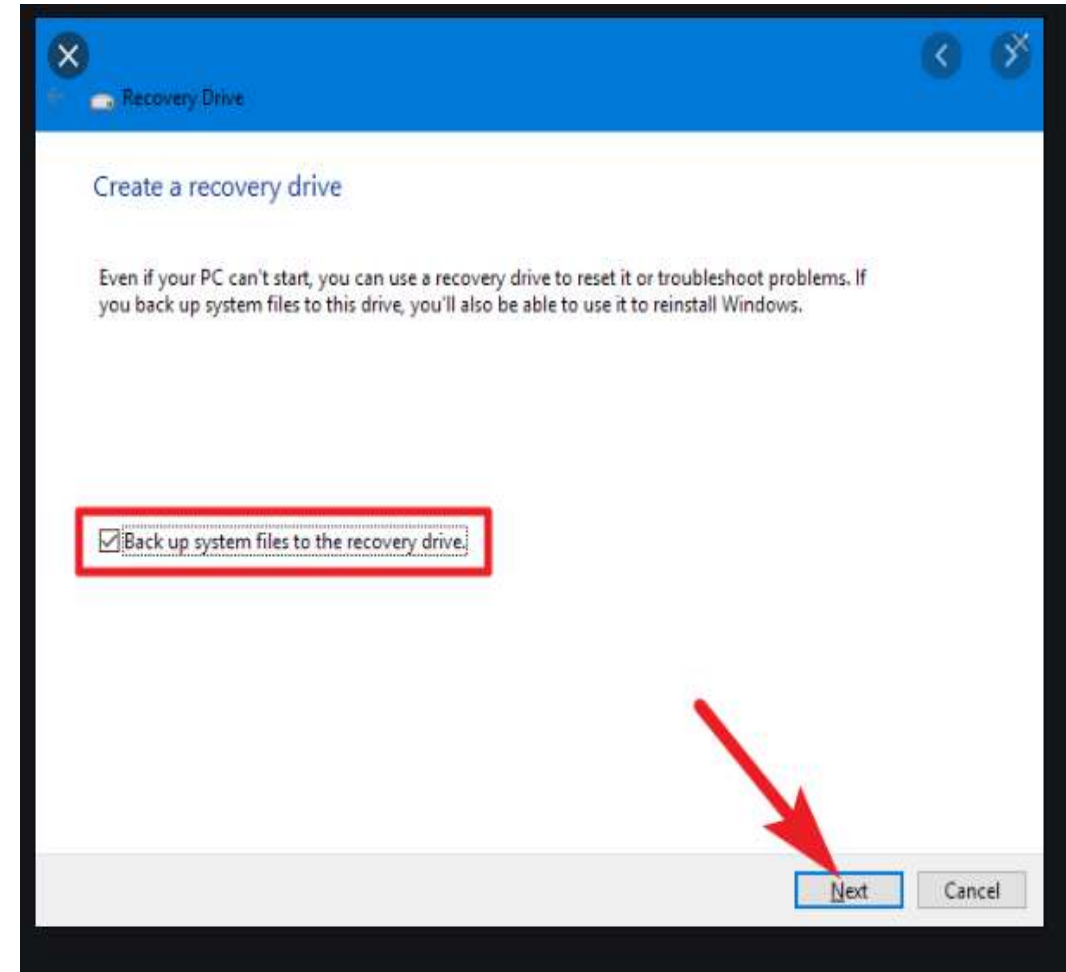
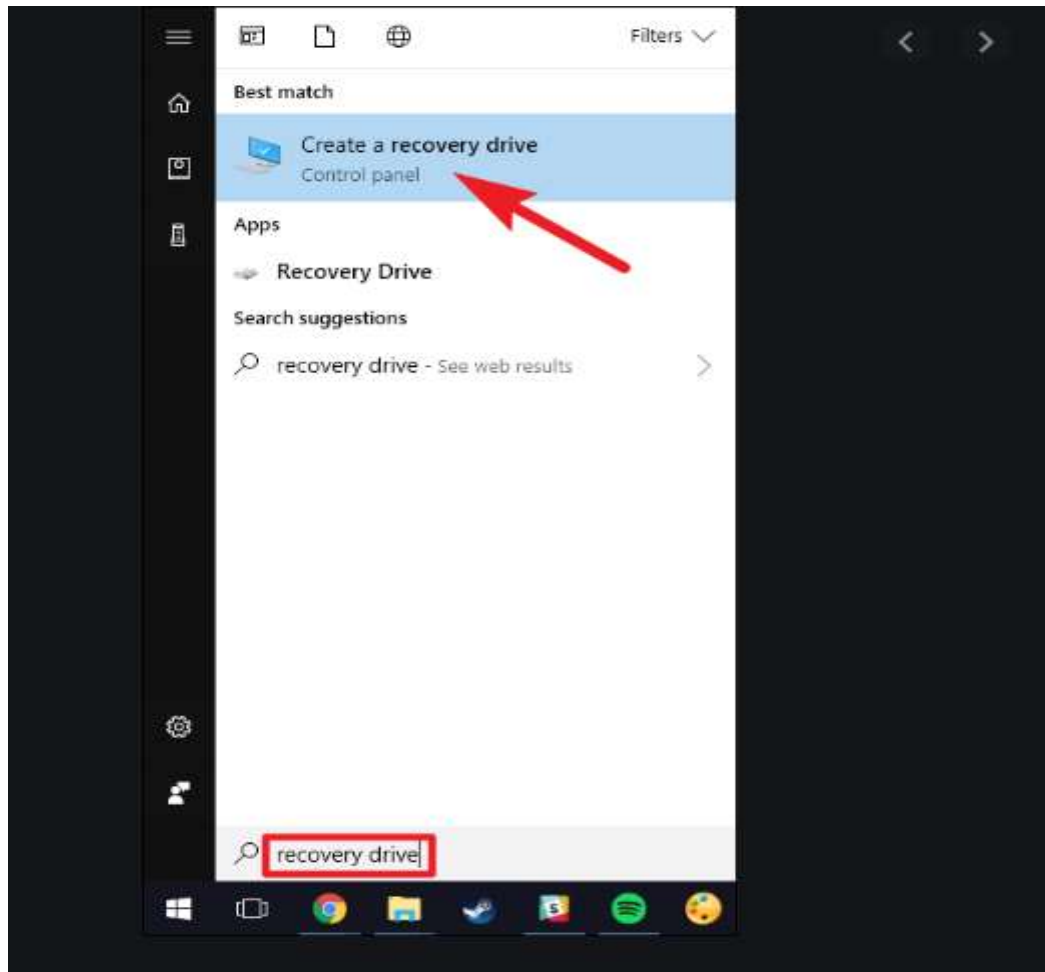
We Are  **Lenovo**

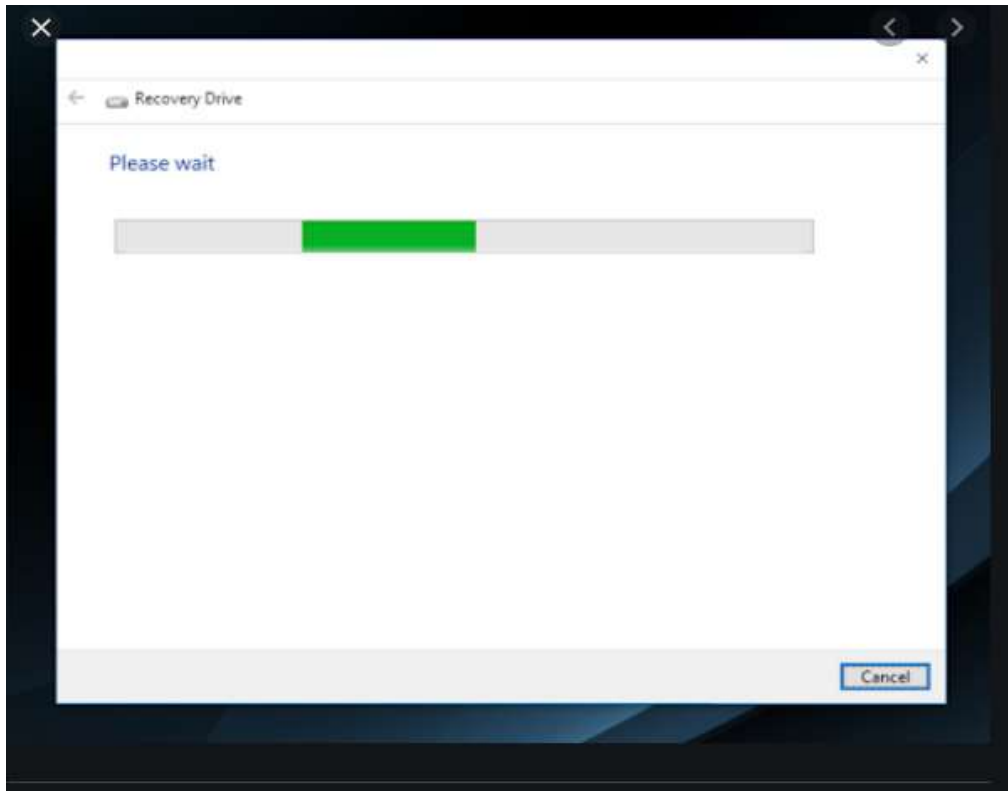
OS installation Guide

Lenovo[™]

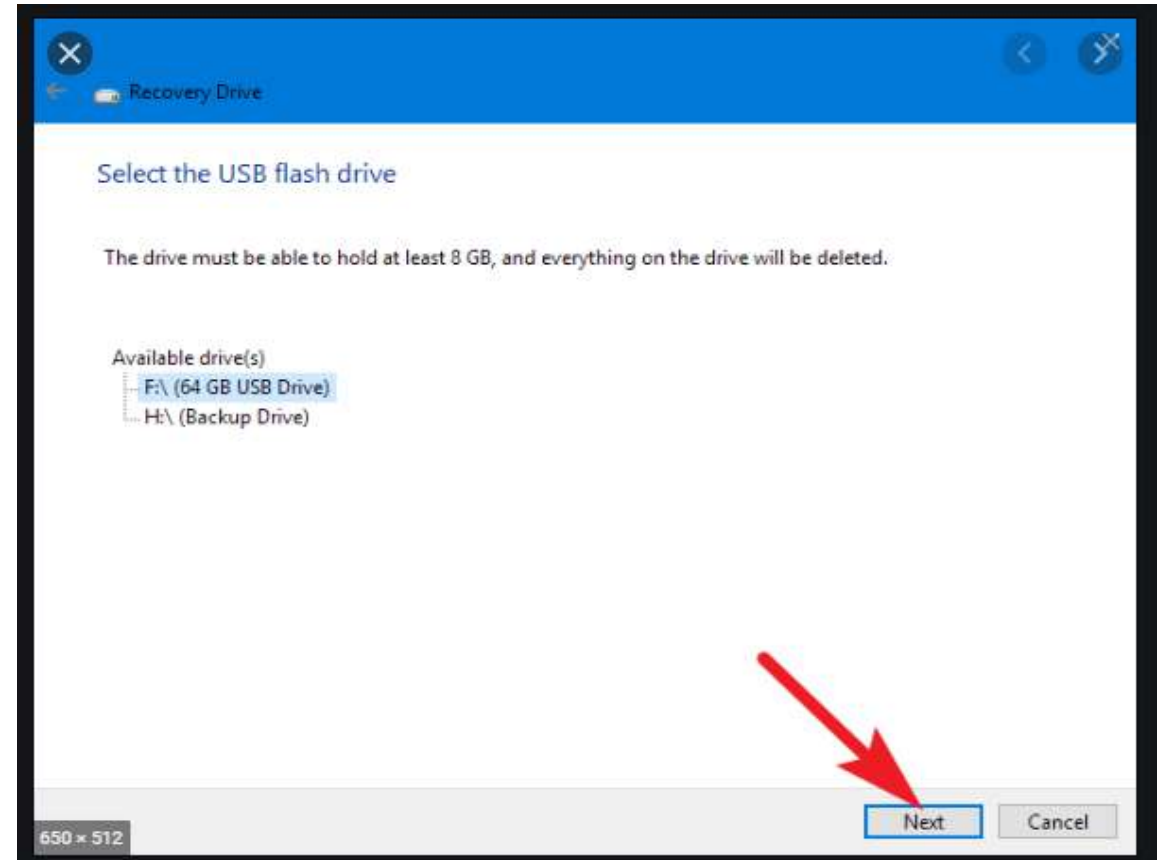
OS installation by taking recovery from alternate working system (MTM number should be matched 10SUSFBP00)

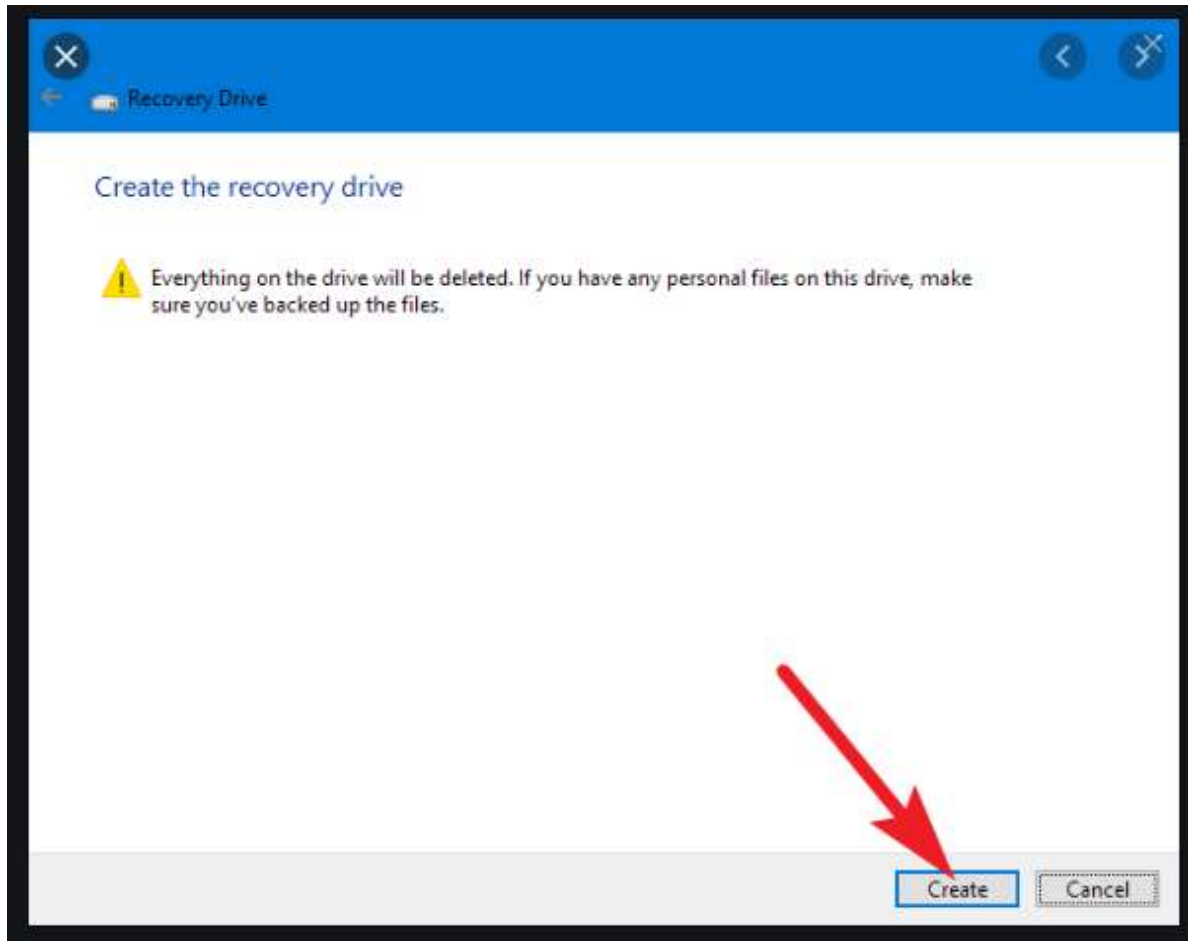
- To create a recovery drive 16GB pen drive is required. Before connecting the pen drive to system take all the data back up from the pen drive. After connecting the pen drive please follow the below steps



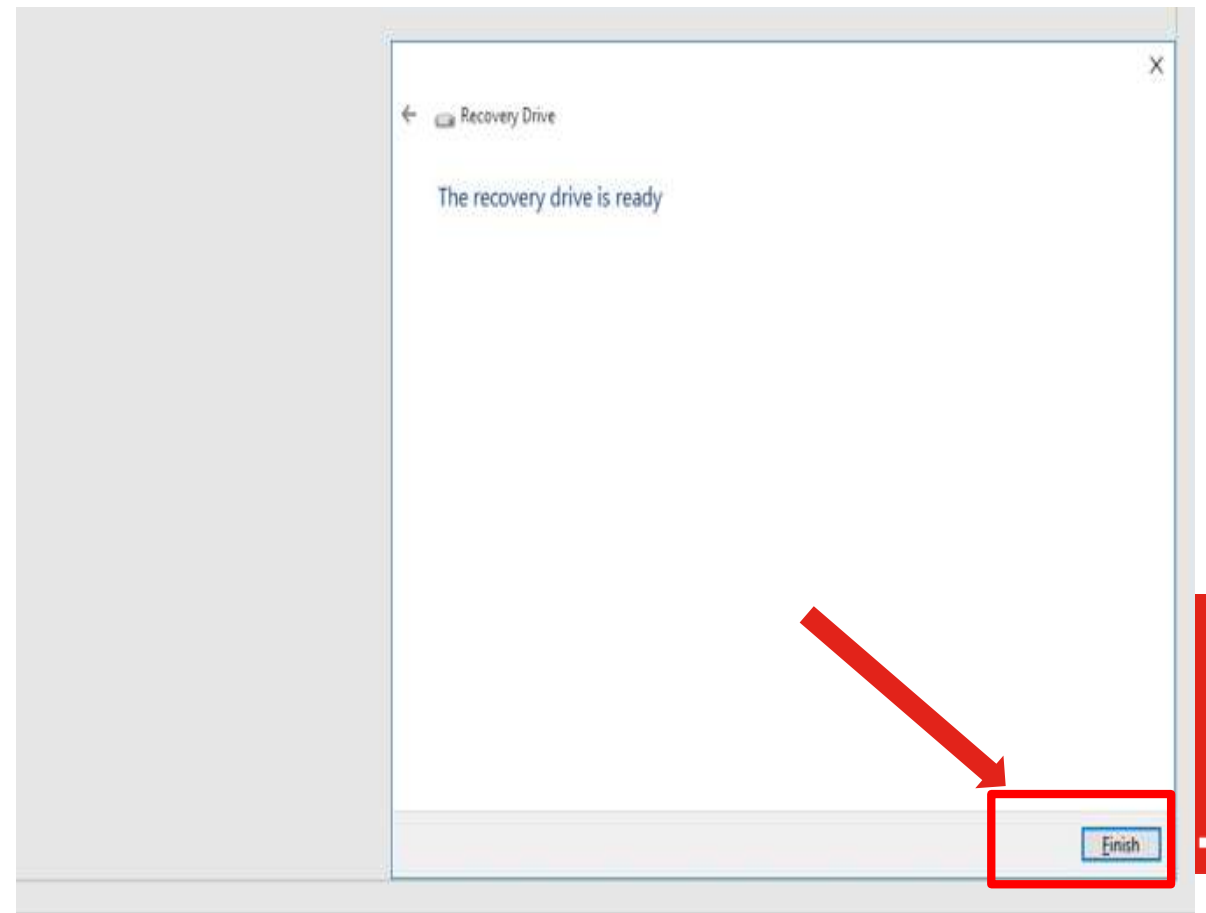


➔ To detect pen drive system will take 5 to 10 min





❑ To create recovery it may take 60 to 90 minutes



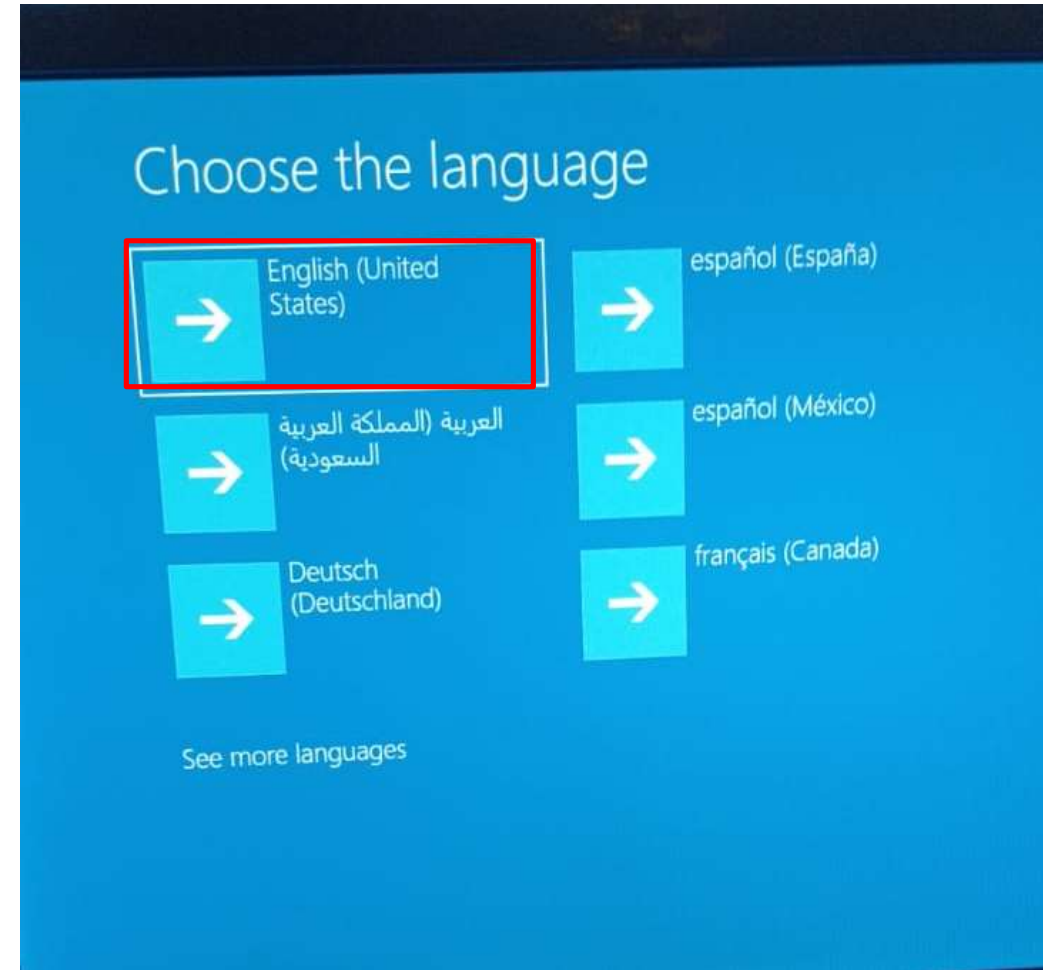
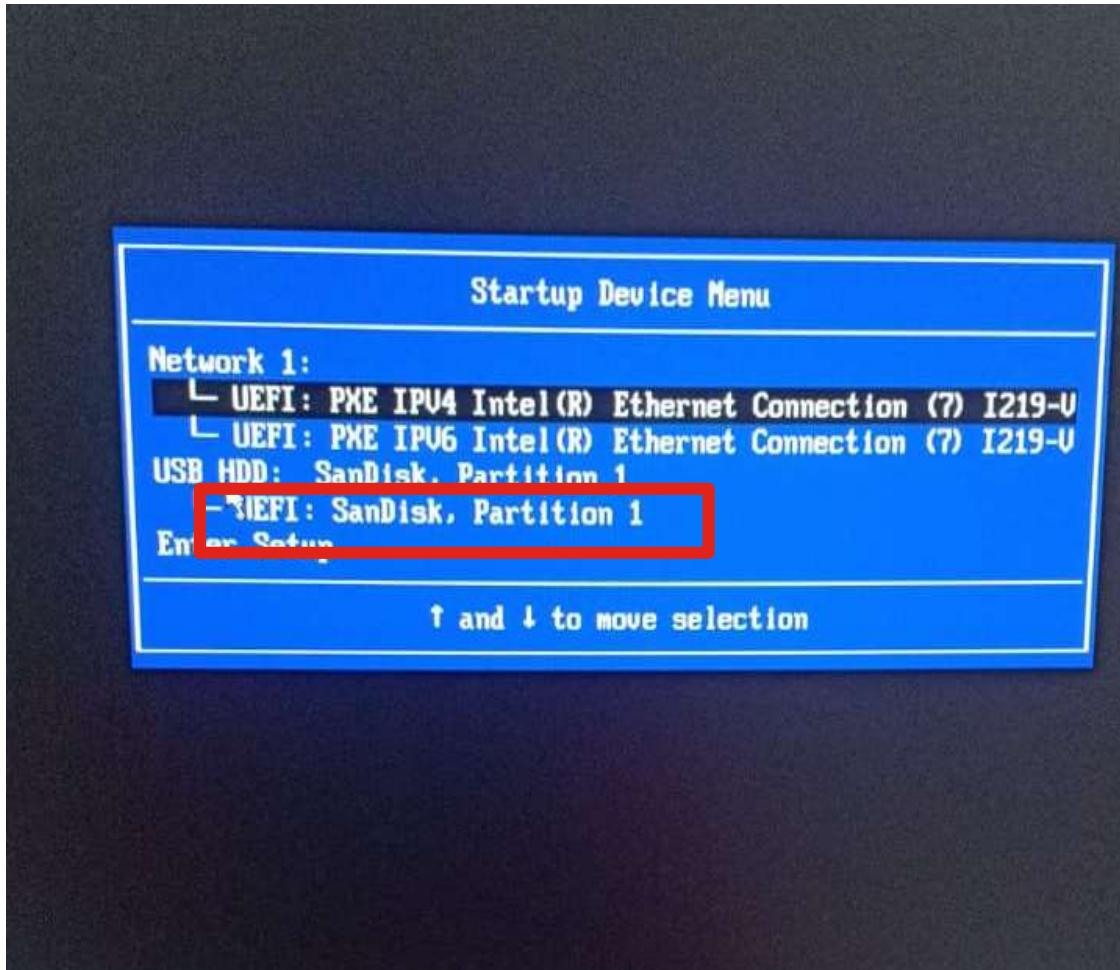
- Do not shutdown the machine until you get finish option shown in the image
- You can use the system while copying the recovery, but do not close the recovery tool

Installation by using recovery pen drive

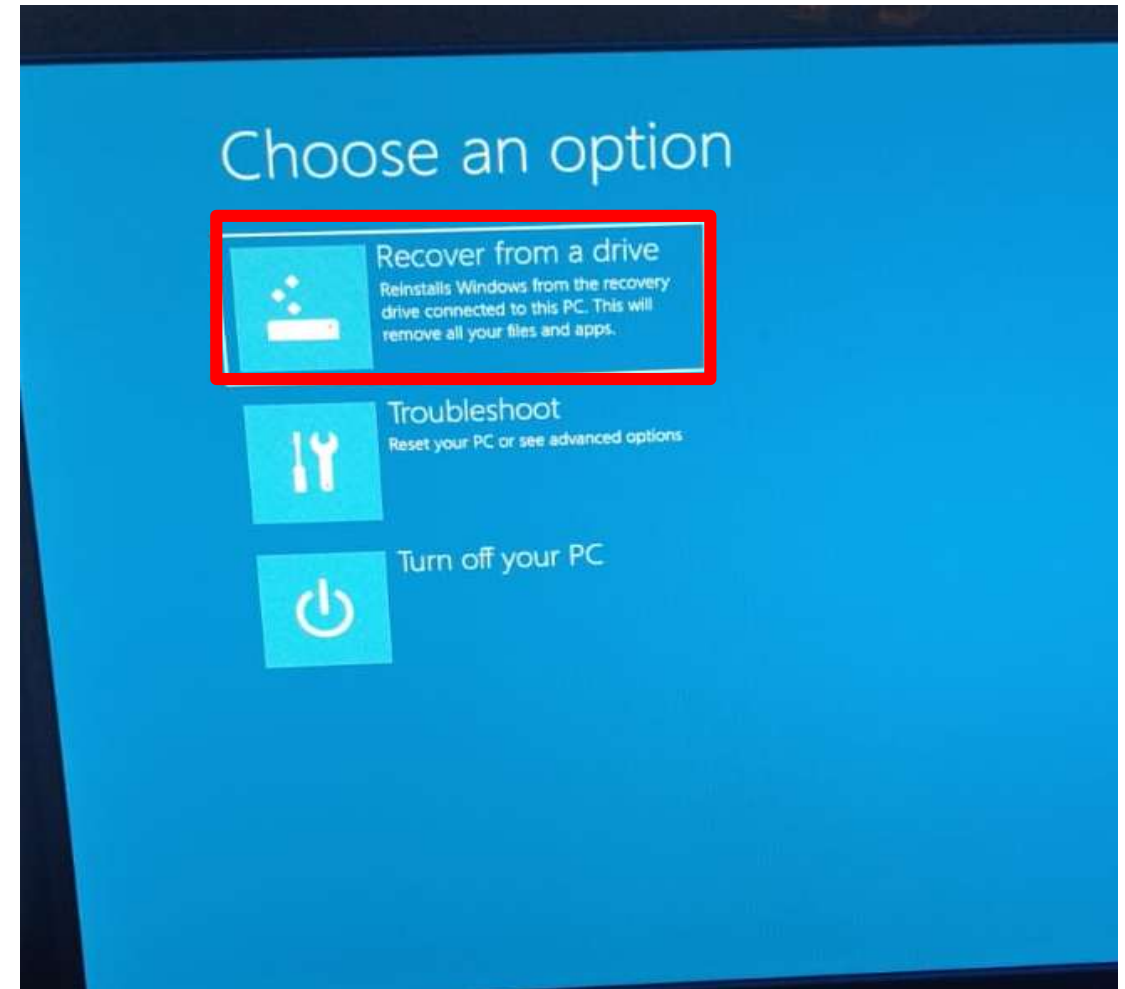
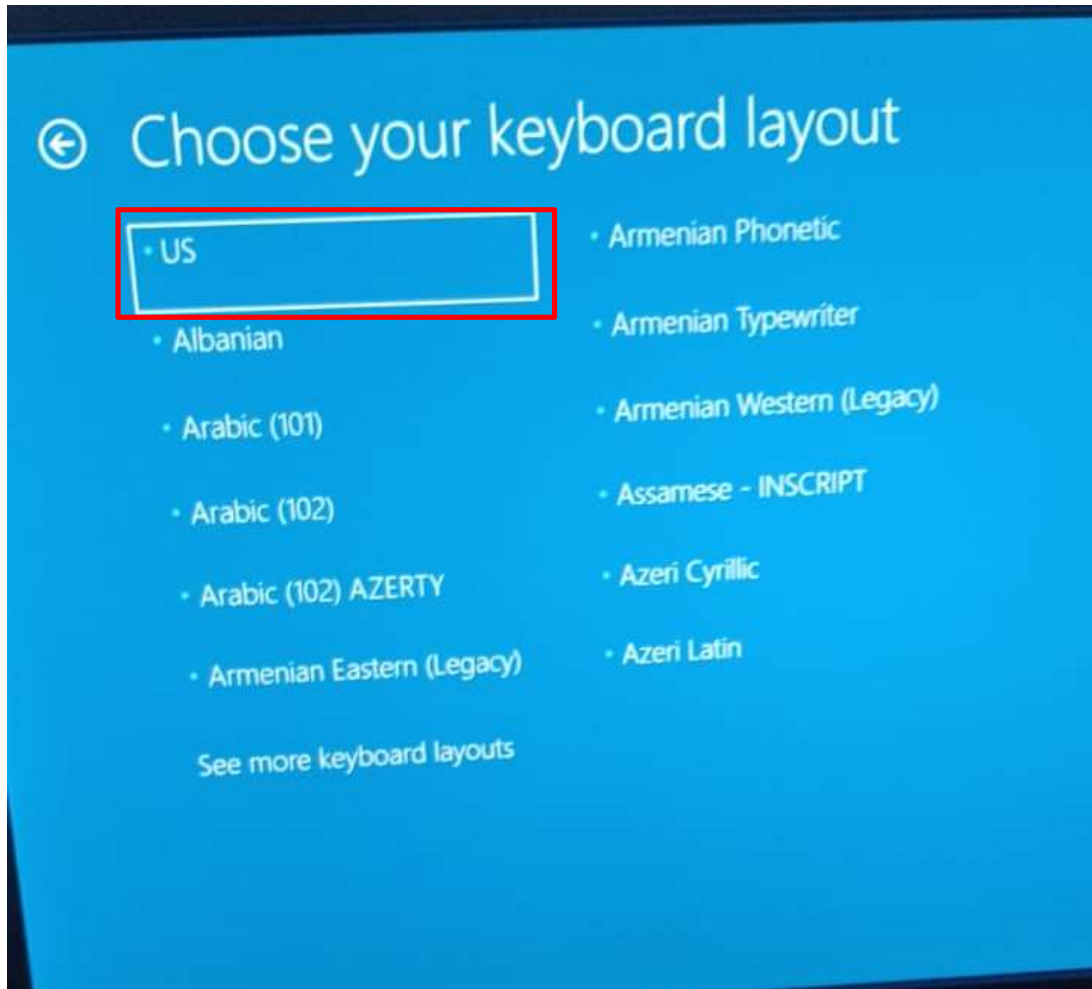
- Connect the recovery pen drive to faulty system
- First please shut down the system, then press the CPU power button once and Immediately start tapping **F12** button 6 to 7 times.



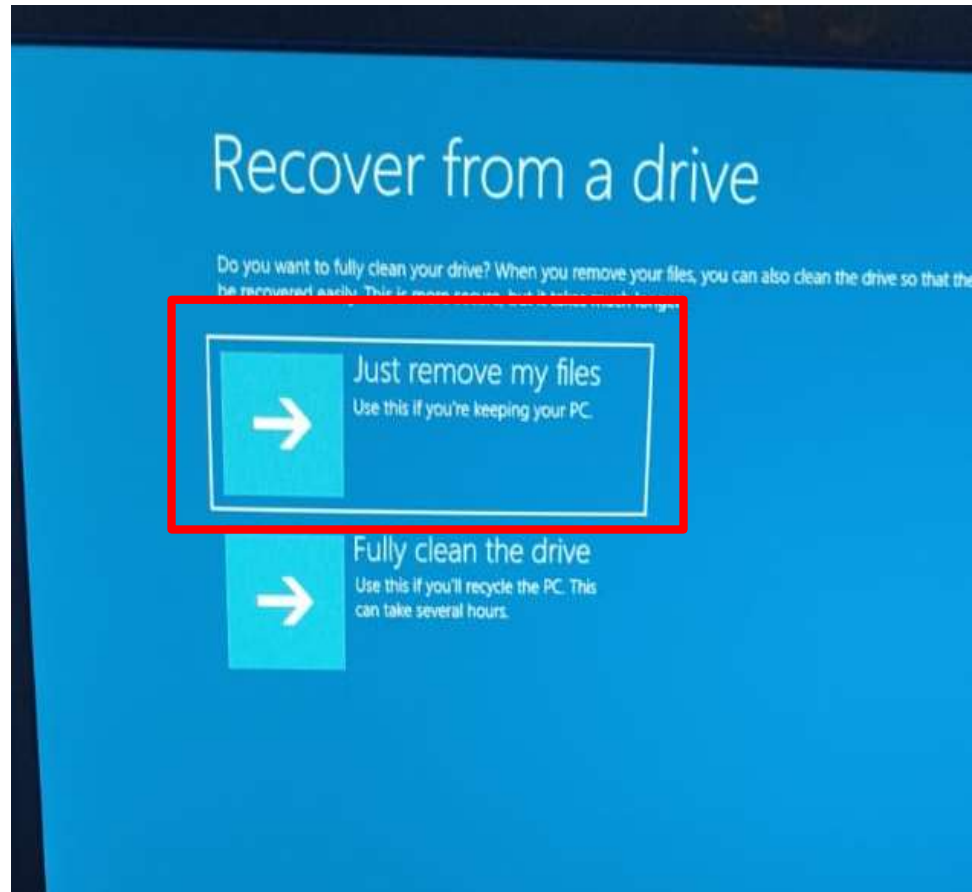
- System will boot into start up device menu, Select the **UEFI “Pen drive name” Partition** and click enter



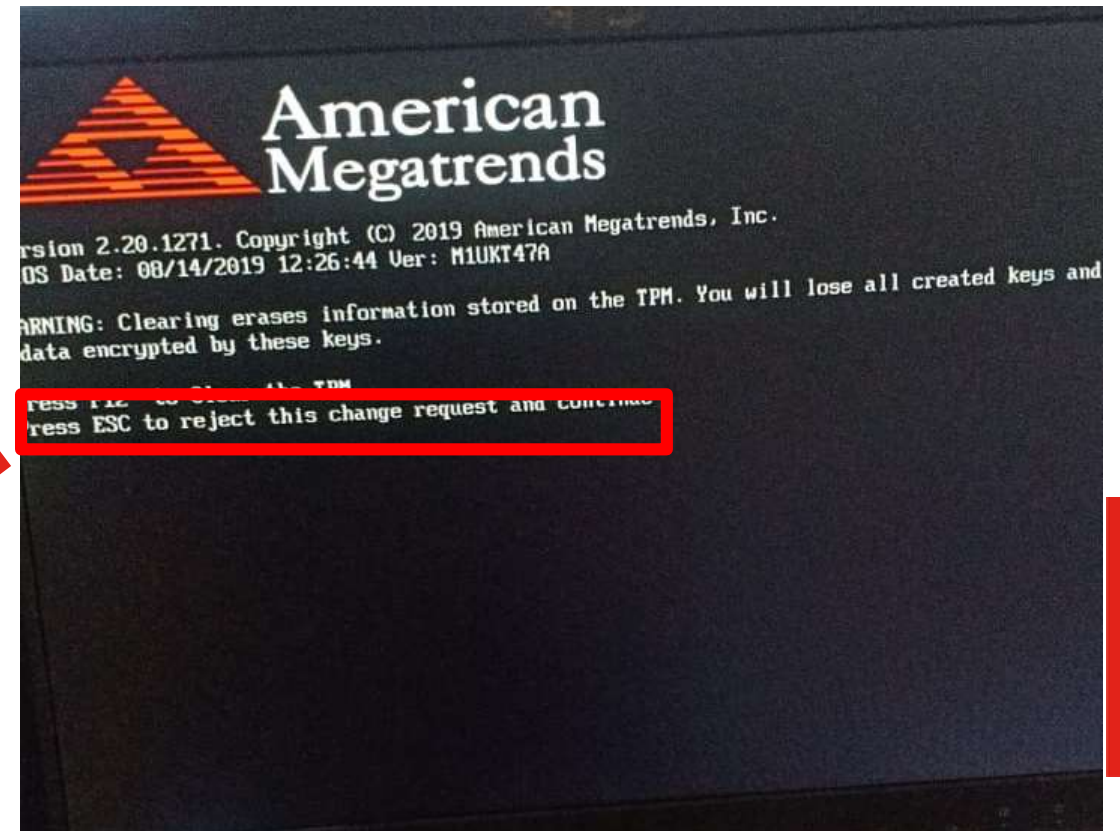
➤ Follow the below steps



➤ Kindly take Important data back up before proceeding for installation

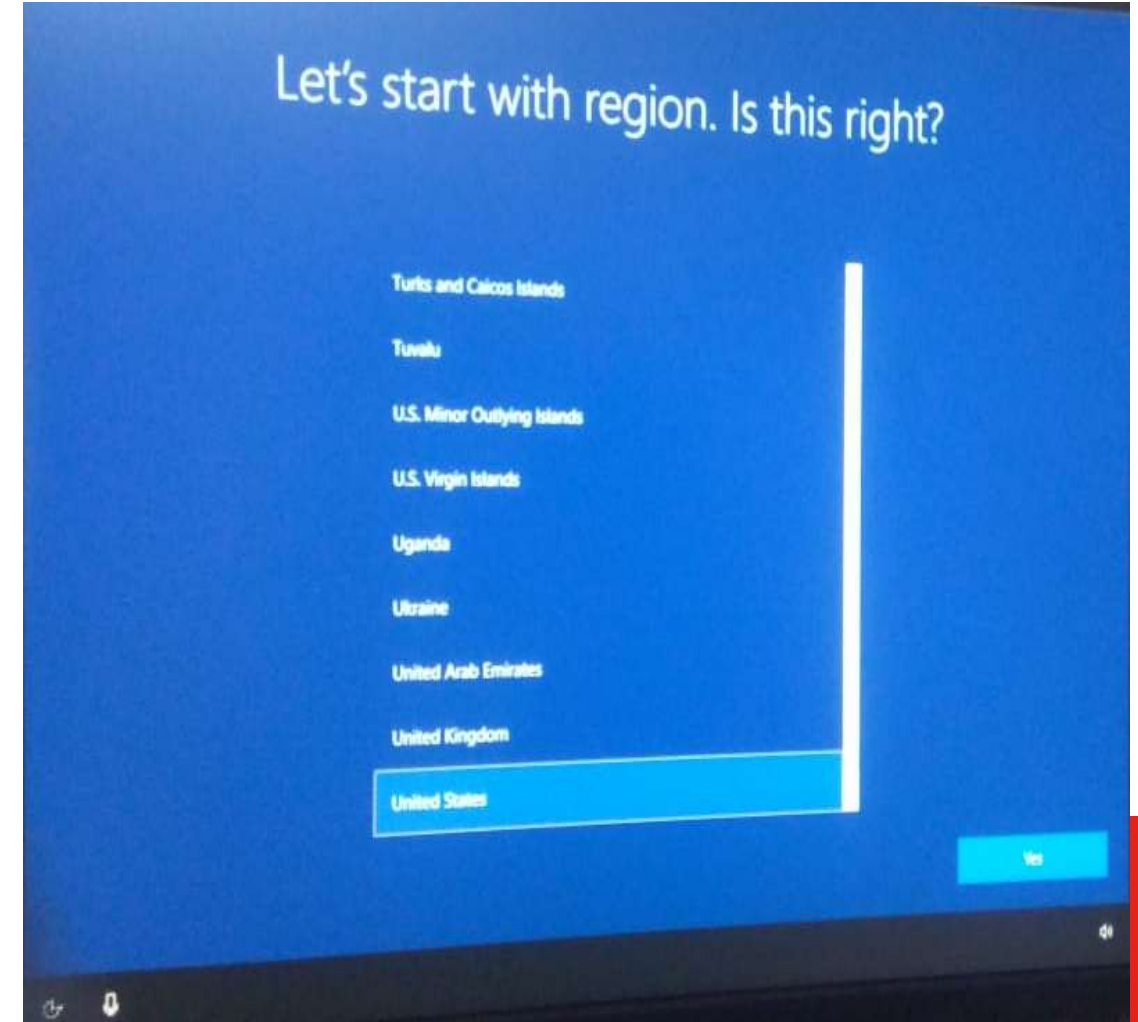
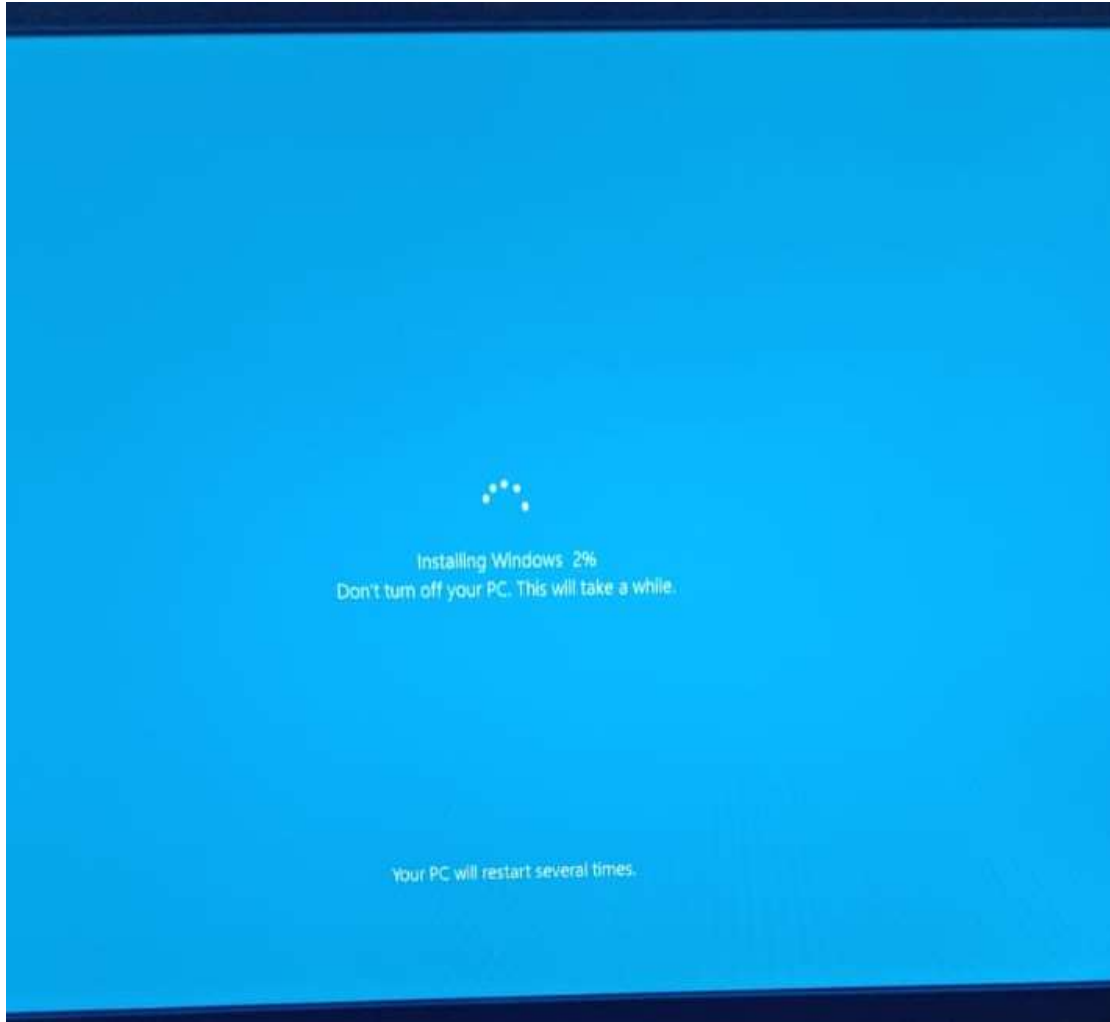


- Select Recover Option
- It may take 20 to 30 min to recover system

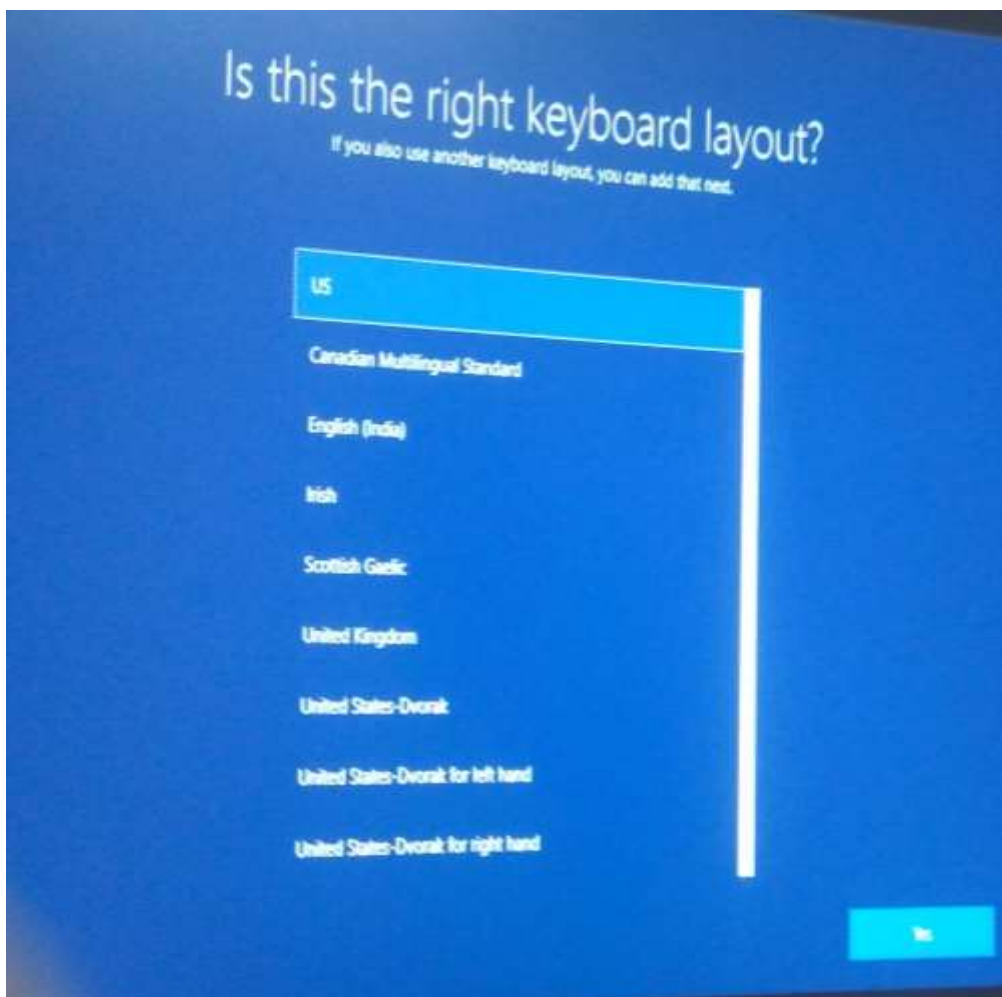


- Press ESC key to continue installation

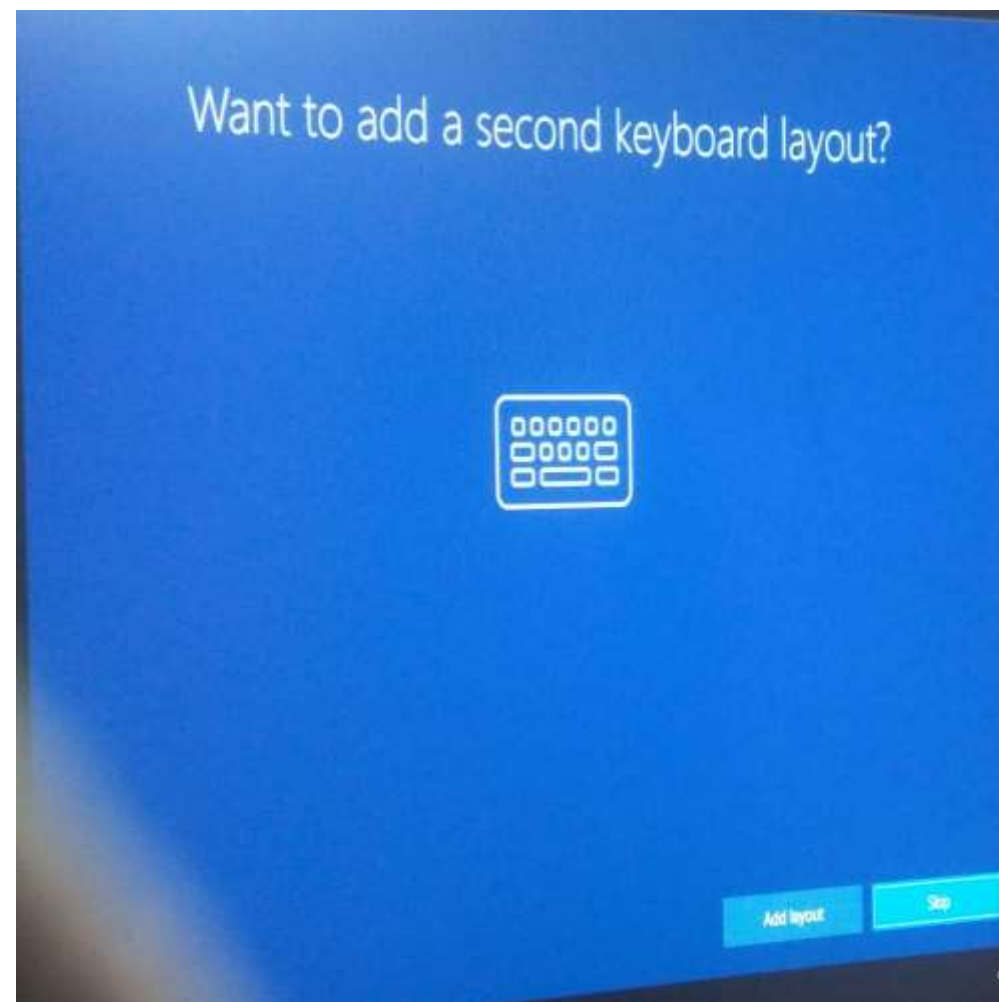
➤ **While installing system may restart several times**



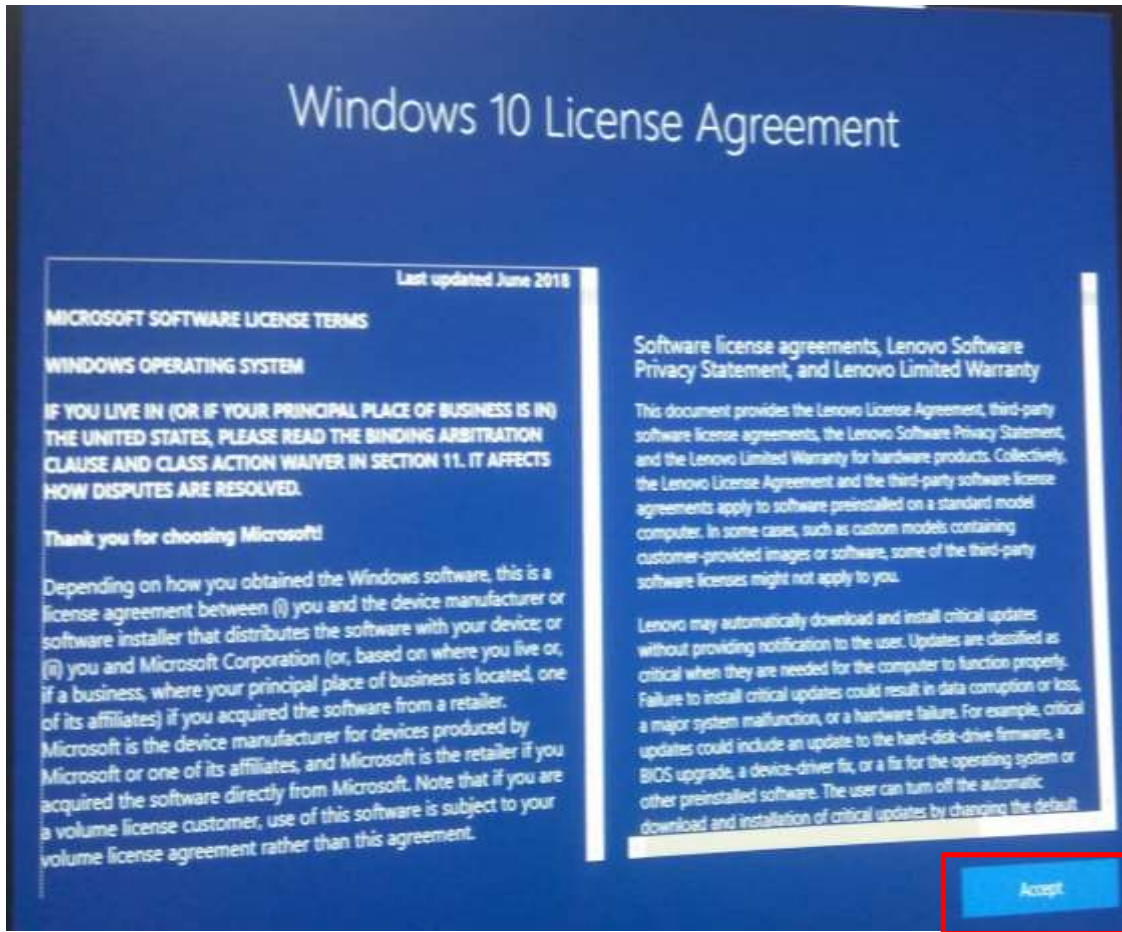
➤ **Select United states**



➤ **Select US**

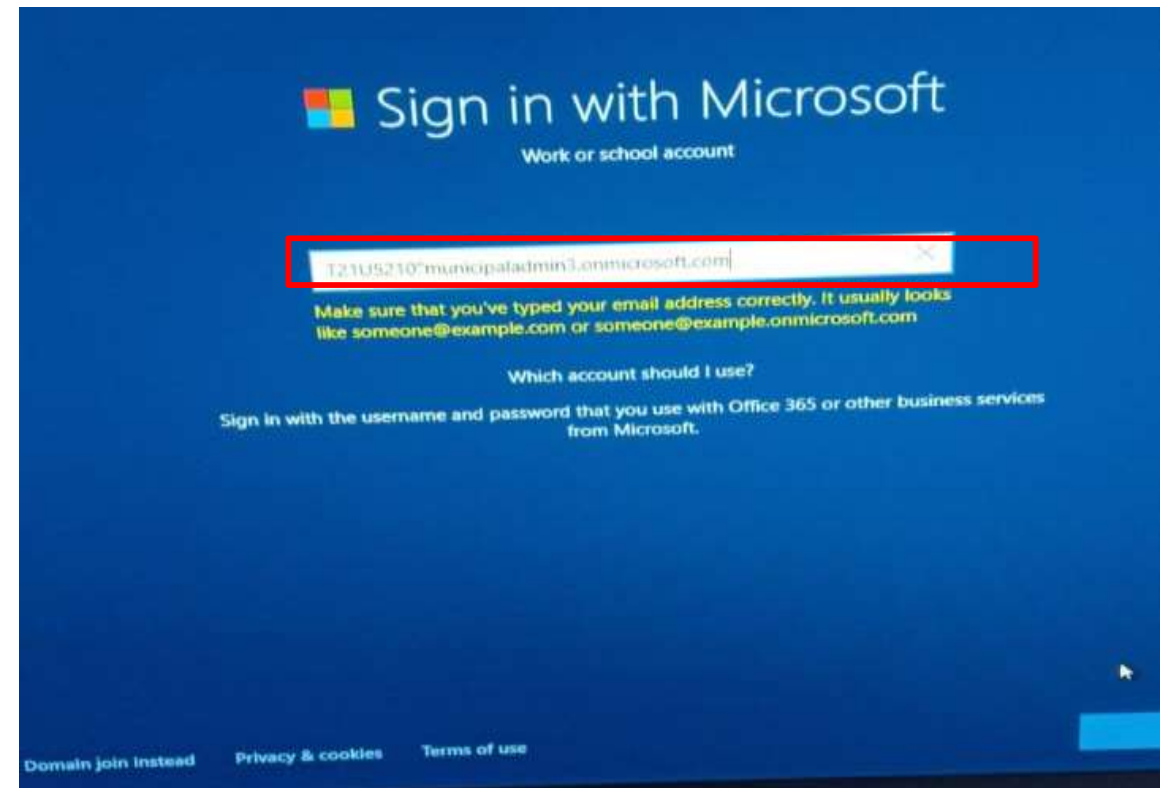


➤ **Select Skip**

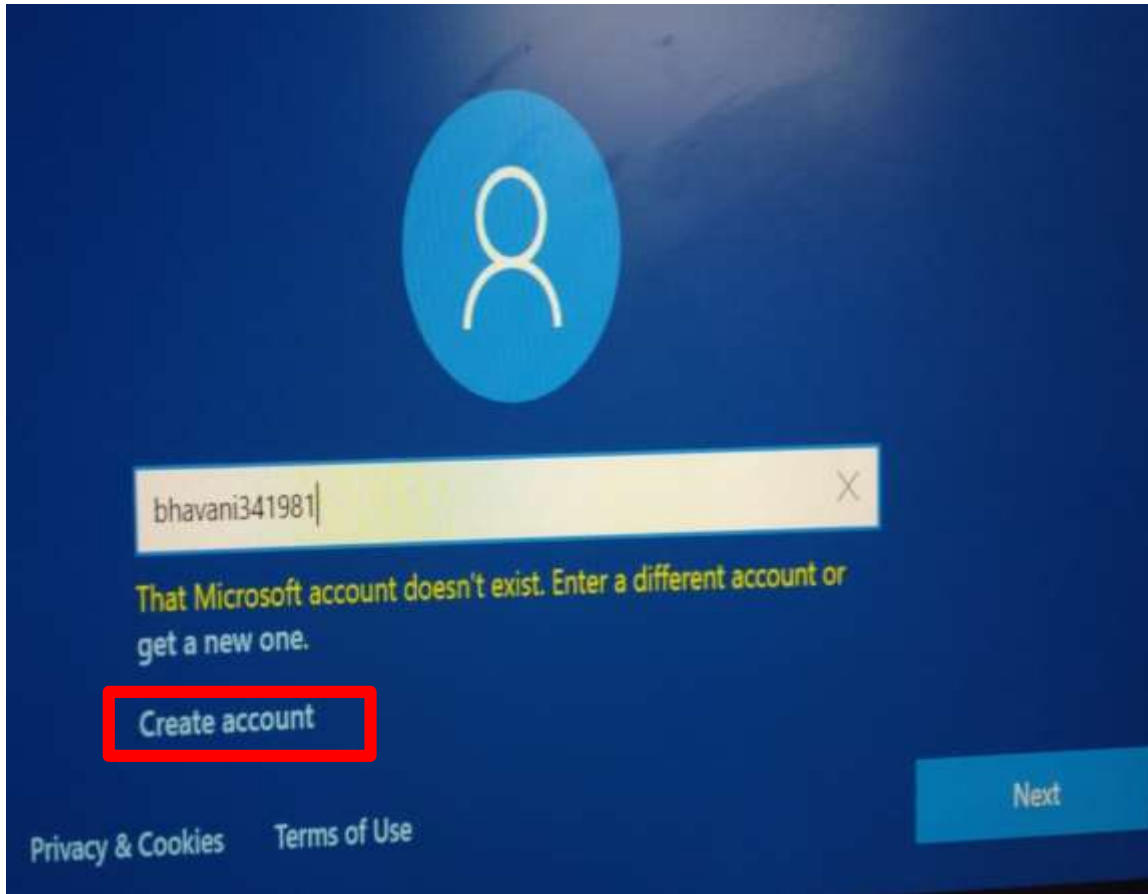


➤ **Select accept**

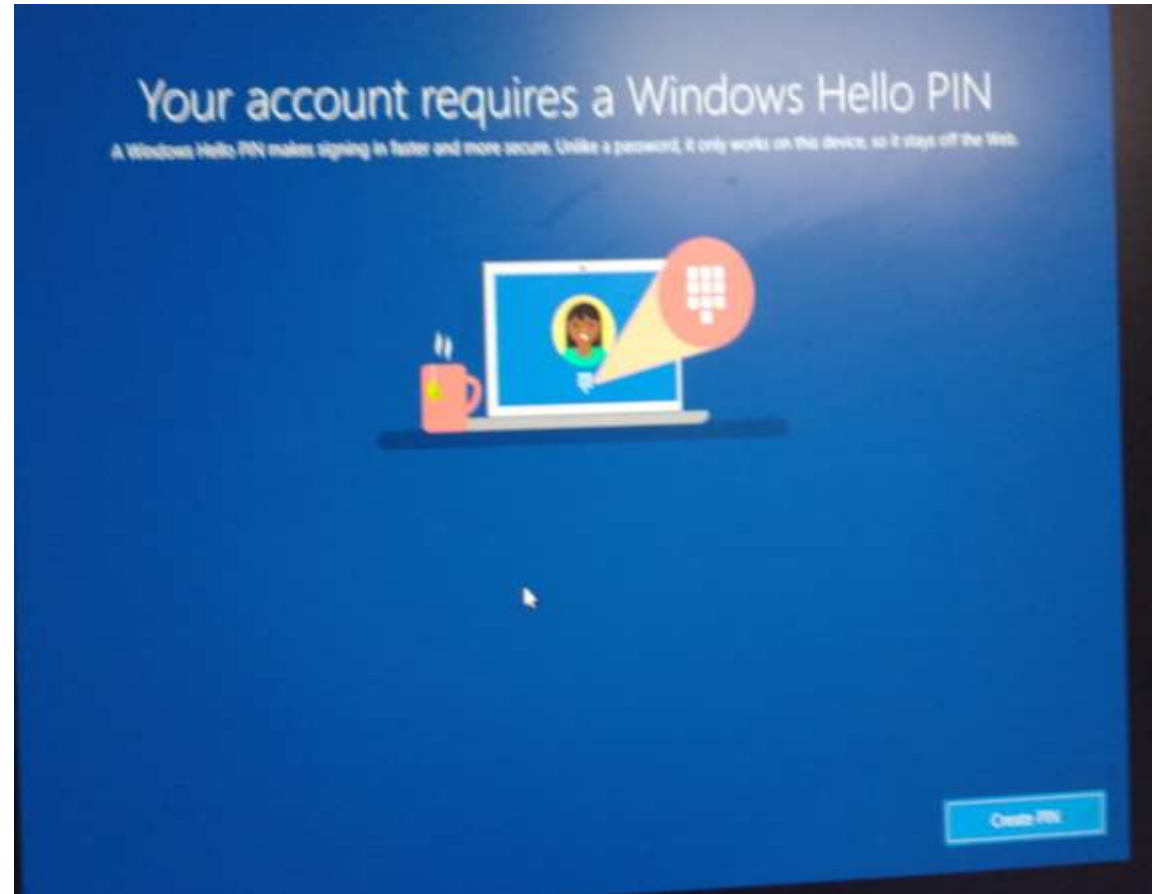
- Next select account type Personal Use
- If account id already available enter the user name show as below image.



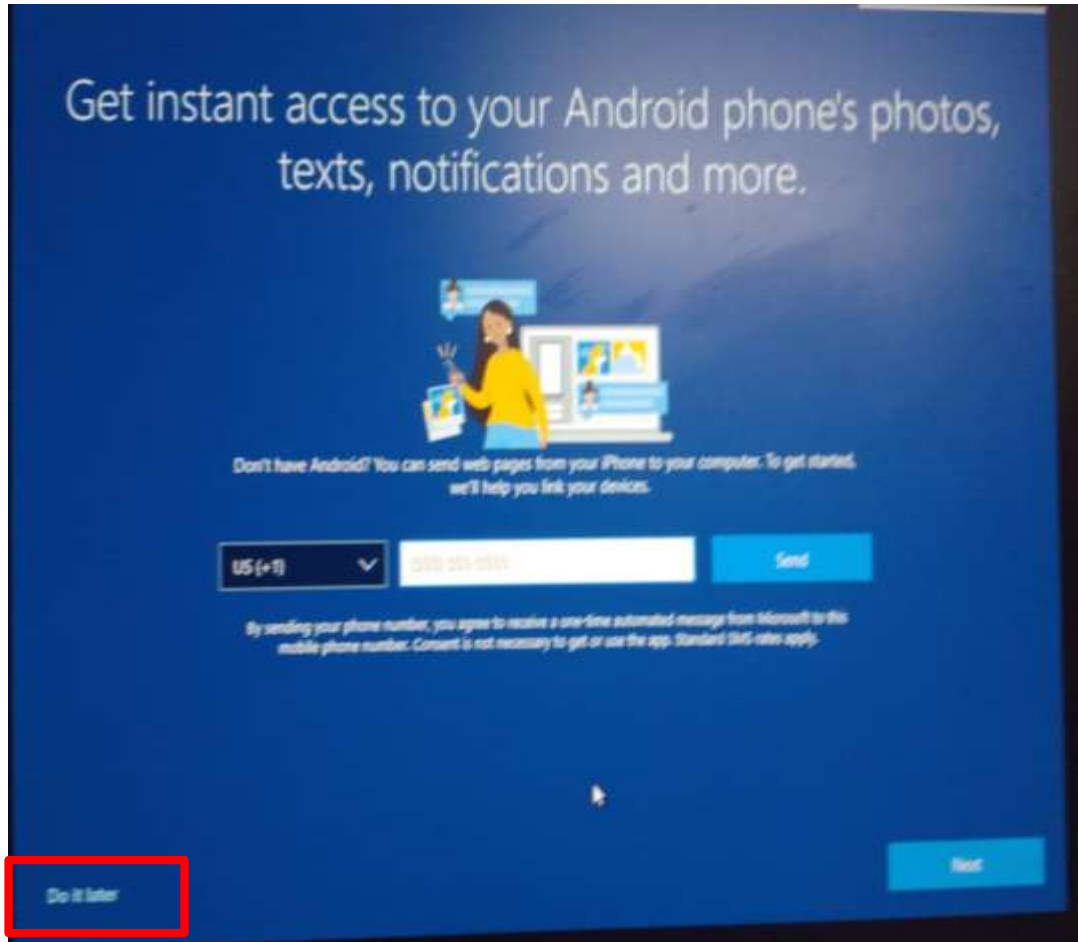
➤ **If account id not available follow the next steps**



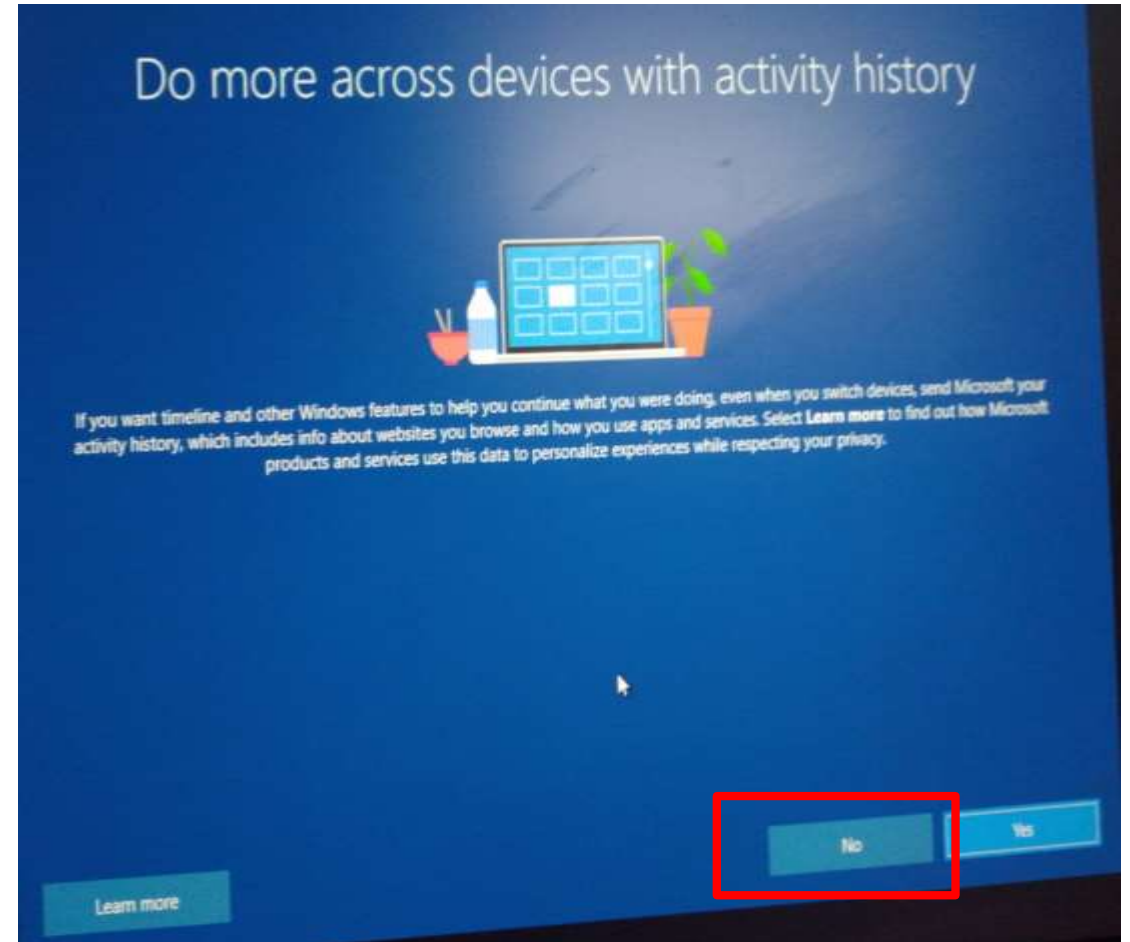
➤ **Create new account to login into system**



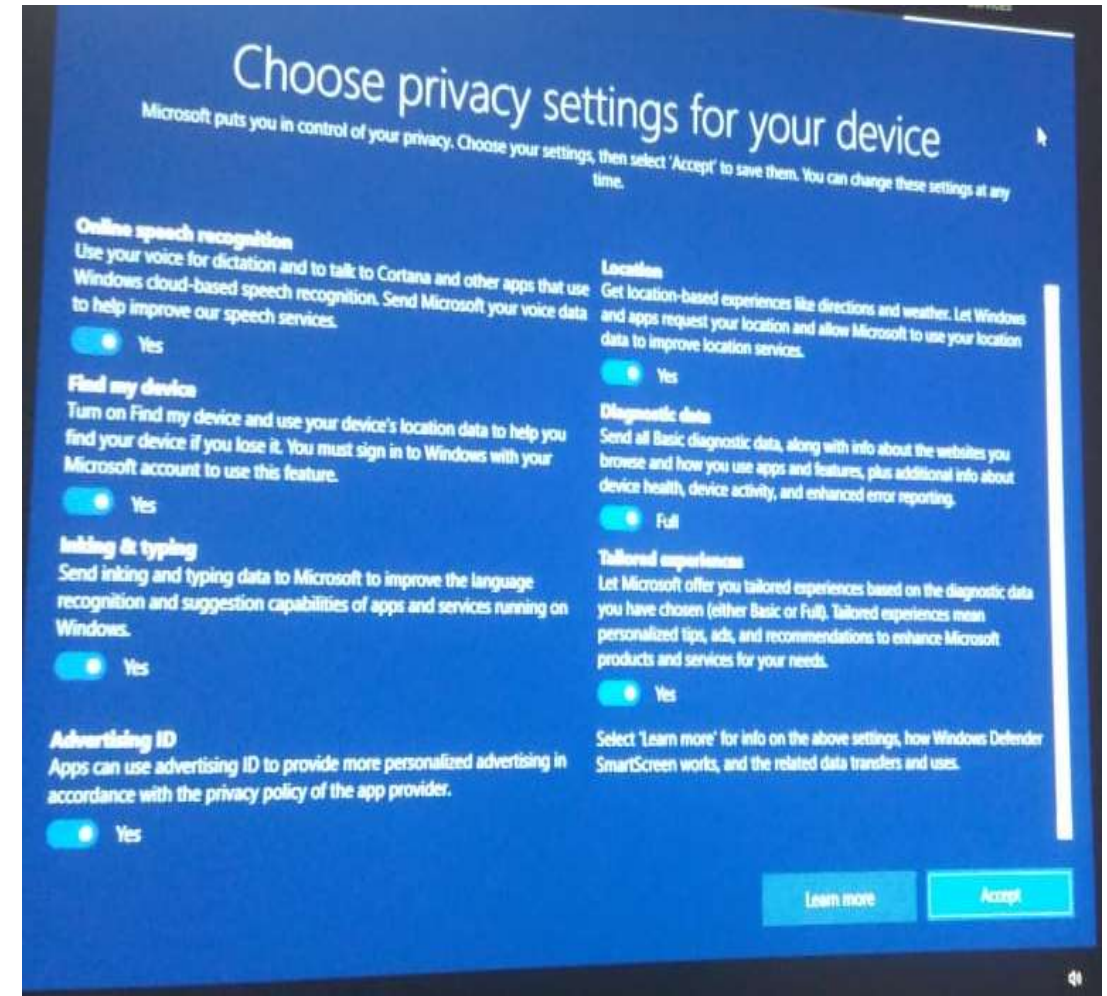
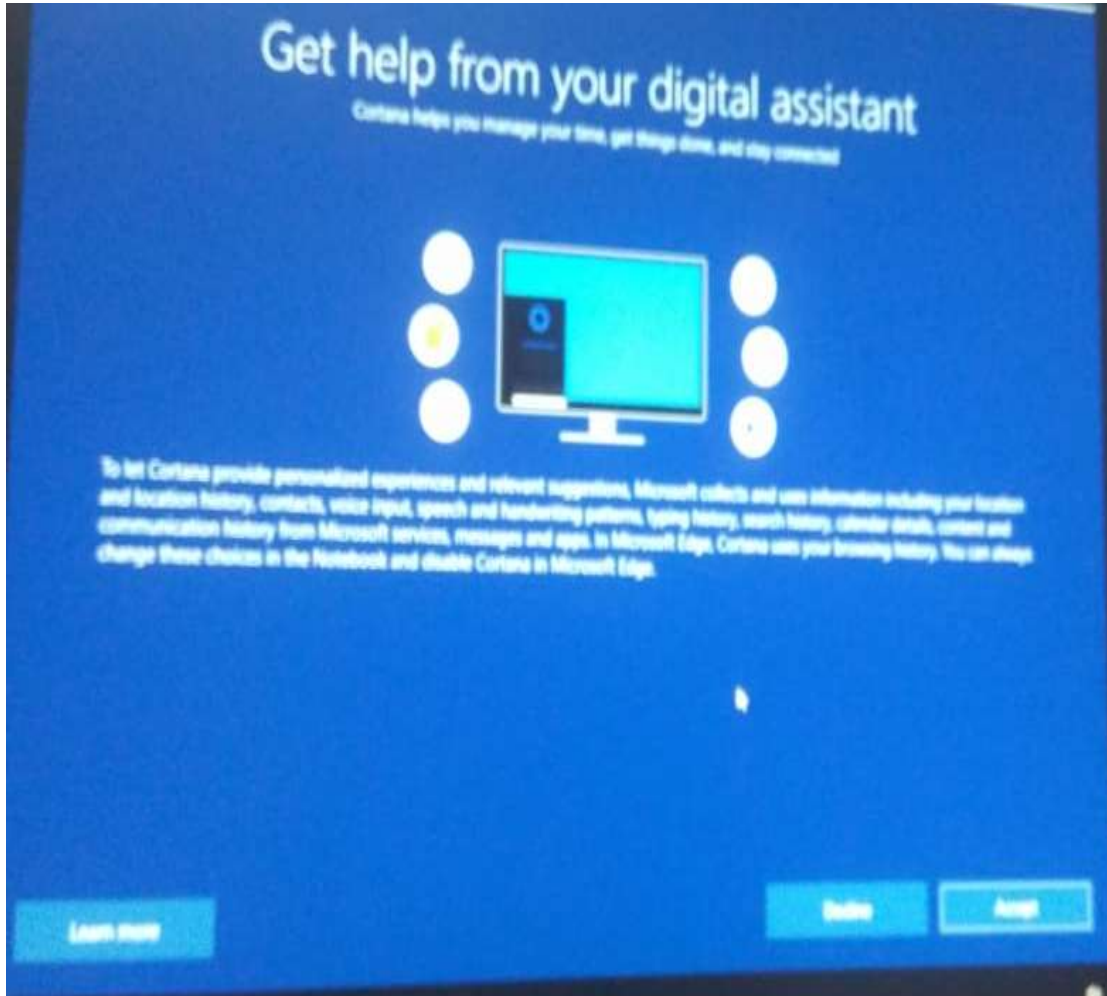
➤ **Create 4 Digit PIN**



➤ **Select Do it later**



➤ **Select NO**



➤ **Select Accept**

➤ **Select Accept**

➤ After 2 to 3 minutes the system will start show as below



thanks.

Different is better

Lenovo™